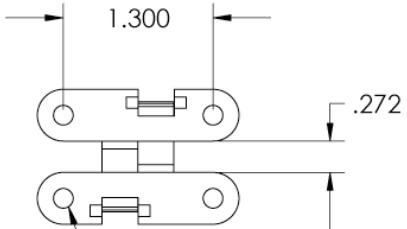
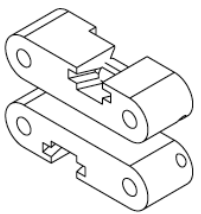
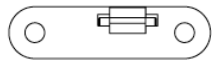
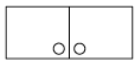
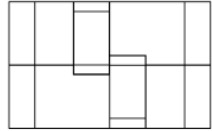
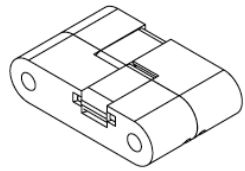
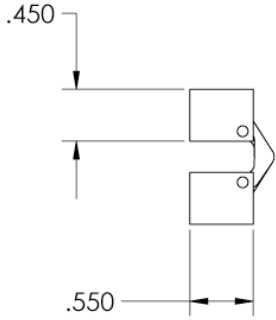
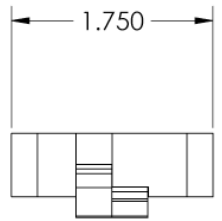


THIS DOCUMENT CONTAINS CONFIDENTIAL PROPRIETARY INFORMATION. DO NOT DISCLOSE TO OR DUPLICATE FOR OTHERS EXCEPT AS AUTHORIZED BY PARASOL AVIATION LTD.

REVISIONS		
REV.	DESCRIPTION	DATE
0	ORIGINAL RELEASE	4-11-94



DRILLED FOR 8-32 X 100 DEG. FLATHEAD SCREW



INTERPRET DRAWING PER ANSI Y 14.5 - 1994	UNLESS OTHERWISE SPECIFIED: DIMENSIONS ARE IN INCHES	DO NOT SCALE DRAWING
THIRD ANGLE PROJECTION	TOLERANCES inch angle XX = ±.015 X = ±.50* XXX = ±.005	APPROVALS
	MATERIAL 2024-T351 ALUM.	DATE
	FINISH ---	DRAWN R.LEE 4-1-94
		DESIGNER W.LEE 3-29-94
		ENG APPR. W.LEE 4-2-94
		MFG APPR. AV 4-11-94
		Q.A. ---

Parasol Aviation Ltd.

10444 McVine Ave.
Sunland CA. 91040
818-352-3322 Phone
818-352-3085 Fax
www.parasolaviation.com
info@parasolaviation.com

SIZE DWG NO. 94-PAR-AV-45 DWG REV. 0

SCALE SHEET 1 of 1