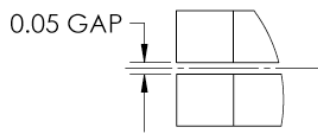
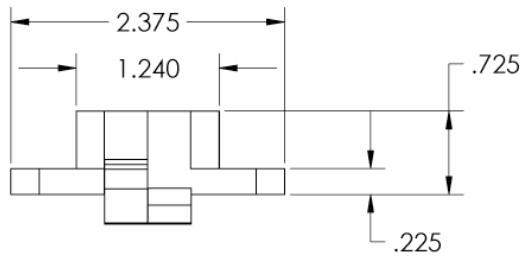
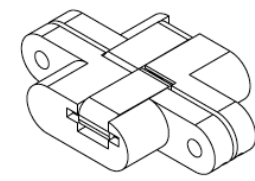
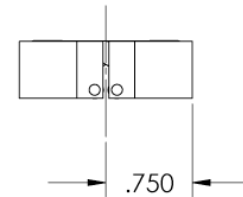
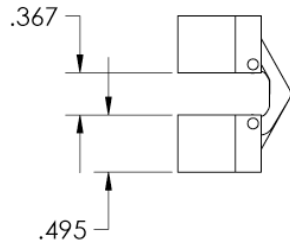
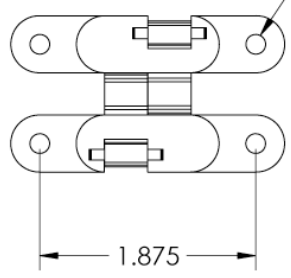


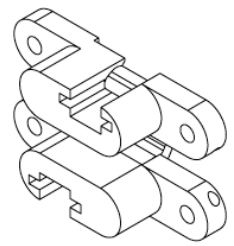
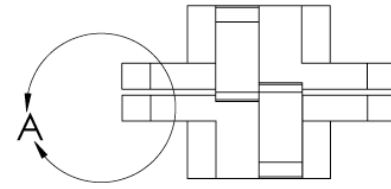
THIS DOCUMENT CONTAINS CONFIDENTIAL PROPRIETARY INFORMATION. DO NOT DISCLOSE TO OR DUPLICATE FOR OTHERS EXCEPT AS AUTHORIZED BY PARASOL AVIATION LTD.

REVISIONS		
REV.	DESCRIPTION	DATE
0	ORIGINAL RELEASE	3-11-93

DRILLED FOR 8-32 X 100 DEG. FLATHEAD SCREW



DETAIL A
SCALE 2 : 1



INTERPRET DRAWING PER
ANSI Y 14.5 - 1994

UNLESS OTHERWISE SPECIFIED:
DIMENSIONS ARE IN INCHES

DO NOT SCALE DRAWING

THIRD ANGLE PROJECTION

TOLERANCES
inch angle
XX = ±.015 X = ±.50°
XXX = ±.005

APPROVALS		DATE
DRAWN	R.LEE	3-3-93
DESIGNER	W.LEE	3-1-93
ENG APPR.	W.LEE	3-5-93
MFG APPR.	AV	3-11-93
Q.A.	---	---



MATERIAL
2024-T351 ALUM.
FINISH ---

Parasol Aviation Ltd.

10444 McVine Ave.
Sunland CA. 91040
818-352-3322 Phone
818-352-3085 Fax
www.parasolaviation.com
info@parasolaviation.com

SIZE **B** DWG NO. **93-PAR-AV-2G** DWG REV. **0**

SCALE SHEET 1 of 1

4

3

2

1

D

C

B

A

D

C

B

A