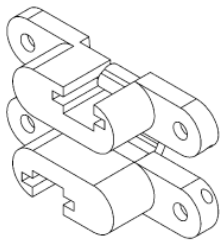
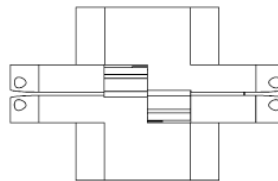
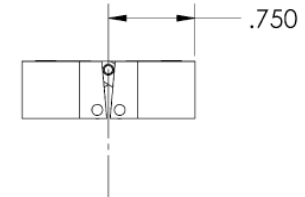
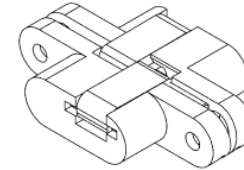
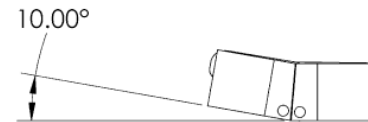
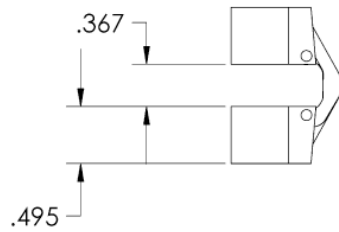
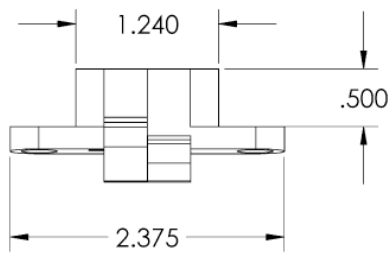
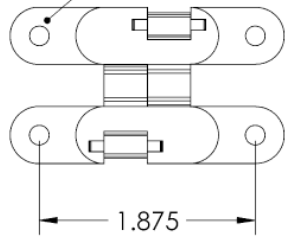
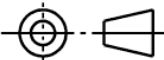



THIS DOCUMENT CONTAINS CONFIDENTIAL PROPRIETARY INFORMATION. DO NOT DISCLOSE TO OR DUPLICATE FOR OTHERS EXCEPT AS AUTHORIZED BY PARASOL AVIATION LTD.

REVISIONS		
REV.	DESCRIPTION	DATE
0	ORIGINAL RELEASE	5-21-93

DRILLED FOR 8-32 X 100 DEG. FLATHEAD SCREW



INTERPRET DRAWING PER ANSI Y 14.5 - 1994 THIRD ANGLE PROJECTION 	UNLESS OTHERWISE SPECIFIED, DIMENSIONS ARE IN INCHES TOLERANCES inch angle XX = ±.015 X = ±.50° XXX = ±.005 MATERIAL 2024-T351 ALUM. FINISH ---	DO NOT SCALE DRAWING		 10444 McVine Ave. Sunland CA. 91040 818-352-3322 Phone 818-352-3085 Fax www.parasolaviation.com info@parasolaviation.com	DWG NO. 93-PAR-AV-2A DWG RE 0
		APPROVALS DRAWN R.LEE 5-10-93 DESIGNER W.LEE 5-9-93 ENG APPR. W.LEE 5-11-93 MFG APPR. AV 5-21-93 D.A. ---	DATE 5-10-93 5-9-93 5-11-93 5-21-93 ---		

Parasol Aviation Ltd.

10444 McVine Ave.
Sunland CA. 91040
818-352-3322 Phone
818-352-3085 Fax
www.parasolaviation.com
info@parasolaviation.com

93-PAR-AV-2A

SHEET 1 of 1