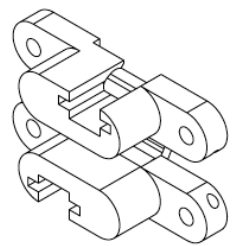
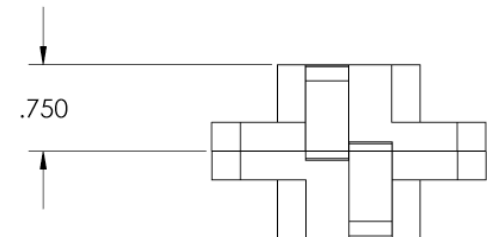
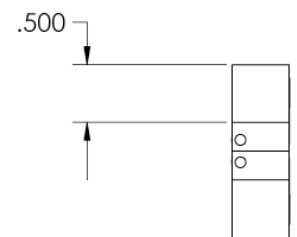
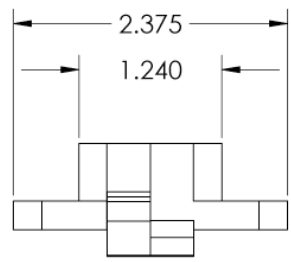
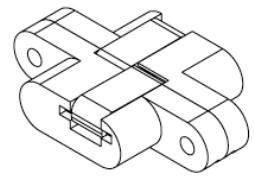
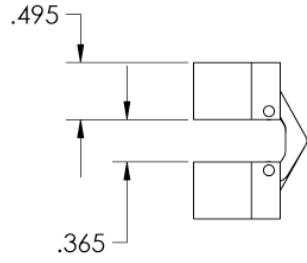
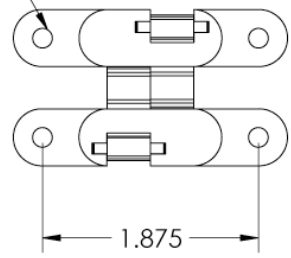


THIS DOCUMENT CONTAINS CONFIDENTIAL PROPRIETARY INFORMATION. DO NOT DISCLOSE TO OR DUPLICATE FOR OTHERS EXCEPT AS AUTHORIZED BY PARASOL AVIATION LTD.

REVISIONS		
REV.	DESCRIPTION	DATE
0	ORIGINAL RELEASE	1-5-93

DRILLED FOR 8-32 X 100 DEG. FLATHEAD SCREW



INTERPRET DRAWING PER ANSI Y 14.5 - 1994

UNLESS OTHERWISE SPECIFIED, DIMENSIONS ARE IN INCHES

DO NOT SCALE DRAWING

THIRD ANGLE PROJECTION

TOLERANCES
inch
XX = ±.015 X = ±.50°
XXX = ±.005

APPROVALS		DATE
DRAWN	R.LEE	12-20-92
DESIGNER	W.LEE	12-19-92
ENG APPR.	W.LEE	12-28-92
MFG APPR.	A.V	1-5-93
Q.A.	---	---



MATERIAL
2024-T351 ALUM.
FINISH ---

Parasol Aviation Ltd.

10444 McVine Ave.
Sunland CA. 91040
818-352-3322 Phone
818-352-3085 Fax
www.parasolaviation.com
info@parasolaviation.com

SIZE **B** DWG NO. **93-PAR-AV-2** DWG REV. **0**

SCALE SHEET 1 of 1

4

3

2

1