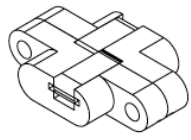
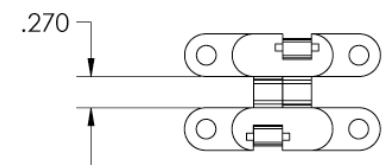
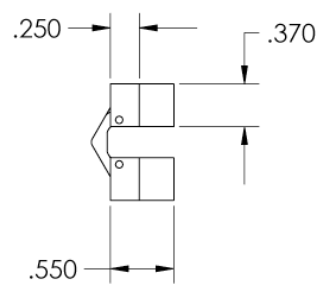
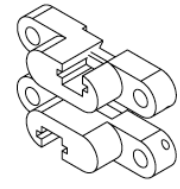
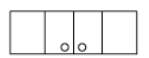
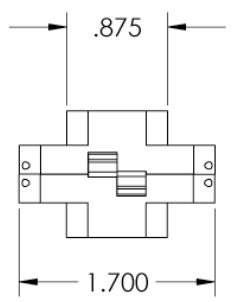
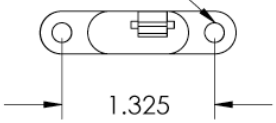


THIS DOCUMENT CONTAINS CONFIDENTIAL PROPRIETARY INFORMATION. DO NOT DISCLOSE TO OR DUPLICATE FOR OTHERS EXCEPT AS AUTHORIZED BY PARASOL AVIATION LTD.

REVISIONS		
REV.	DESCRIPTION	DATE
0	ORIGINAL RELEASE	3-10-93



DRILLED FOR 8-32 X 100 DEG. FLATHEAD SCREW



INTERPRET DRAWING PER ANSI Y 14.5 - 1994

UNLESS OTHERWISE SPECIFIED, DIMENSIONS ARE IN INCHES

DO NOT SCALE DRAWING

THIRD ANGLE PROJECTION



TOLERANCES  
inch angle  
XX = ±.015 X = ±.50°  
XXX = ±.005

MATERIAL  
2024-T351 ALUM.  
FINISH ---

APPROVALS		DATE
DRAWN	R.LEE	3-5-93
DESIGNER	W.LEE	3-2-93
ENG APPR.	W.LEE	3-10-93
MFG APPR.	A.V	3-10-93
Q.A.	---	---



**Parasol Aviation Ltd.**  
10444 McVine Ave.  
Sunland CA. 91040  
818-352-3322 Phone  
818-352-3085 Fax  
www.parasolaviation.com  
info@parasolaviation.com

SIZE DWG NO.  
**B** 93-PAR-AV-1

SCALE SHEET 1 of 1

DWG REV  
0